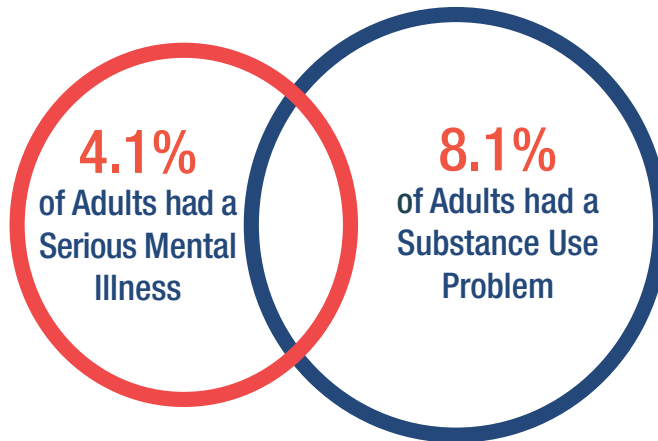


# SC BEHAVIORAL HEALTH ISSUES: AT A GLANCE



**Mental Health**



**Substance Use Disorder**

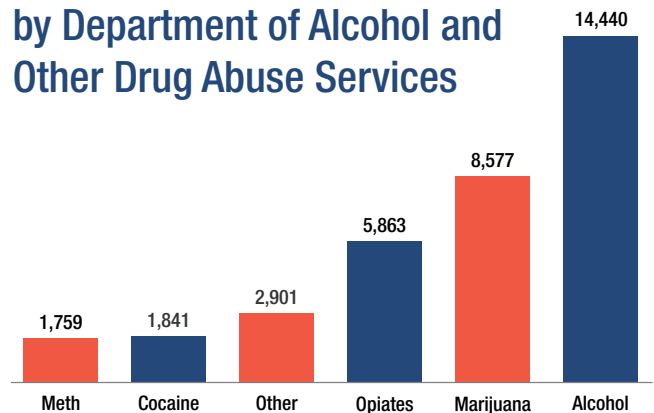
Source: SAMSHA, National Surveys on Drug Use & Helath, 2015-2016, Age 18+



**~174,159** Adults Report Poor Mental Health **14+** Days per Month on Average

Source: DHEC, SC Behavioral Risk Factor Servailance System, 2016

## Treatment Admissions as Reported by Department of Alcohol and Other Drug Abuse Services



Source: SC DAODAS, 2016



**325,480** Hospitalizations & Emergency Department Visits for Mental Health

Source: SC Revenue & Fiscal Affairs Office, UB-04 Hospital Billing Data 2016



**6,970** Suicide Attempts  
**818** Suicide Deaths

Source: DHEC, Death Certificates, 2016

**876** Overdose Deaths Including:

- 616** Opioid Deaths
- 190** Fentanyl Deaths
- 108** Heroin Deaths

\*Deaths Could be Related to Multiple Causes

Source: DHEC, Death Certificates, 2016



## BEHAVIORAL HEALTH COALITION: ADDRESSING THE ISSUES

Establish a comprehensive system that ensures access to, coverage for, effective coordination and awareness of mental health and substance use disorders services and resources.



### QUESTIONS?

SCHA - SC BEHAVIORAL HEALTH COALITION  
ELIZABETH HARMON: [EHARMON@SCHA.ORG](mailto:EHARMON@SCHA.ORG)

SCHA - ALLIANCE FOR A HEALTHIER SC  
DR. RICK FOSTER: [RFOSTER@SCHA.ORG](mailto:RFOSTER@SCHA.ORG)